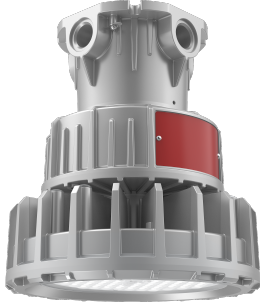


## CPS LED LIGHTING



**PRODUCT NAME : EXPLOSION PROOF AREA LIGHT**

**PRODUCT SKU EXAMPLE: CPS-HA03-50W-UL-5000K**

### PRODUCT DESCRIPTION

is a certified Explosion-proof LED Luminaire with waterproof, dustproof, anti-corrosion and shock resistance, well combination of robust structure and outstanding appearance. It's an ideal solution for all types of harsh and hazardous applications. The explosion proof line is MADE TO ORDER. 277-480V only offered in 30W & 60W, please consult.

### APPLICATIONS

Chemical, Oil, gas and petrochemical, Pulp and paper, Foundries, Manufacturing, Waste and sewage treatment, Power generation, Paint spray booths.

### OTHER INFO

Various installation methods such as ceiling mount, stanchion mount, wall bracket, pendant mount and trunnion mount are available to meet different installation demands.

Class I, Division 1, Groups B, C, D  
Class I, Division 2, Groups B, C, D  
Class II, Division 1, Groups E, F, G  
Class II, Division 2, Groups F, G  
Class III

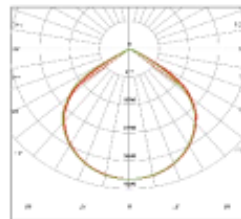
Suitable for Use Wet Locations Suitable for Marine locations Type 4X IP66

### ORDERING INFORMATION

SERIES	WATTAGE	VOLTAGE	CCT
CPS-HA03-	30W	UL=120-277V / UH= 277-480V	3000,4000K,5000K
CPS-HA03-	40W	UL=120-277V	3000,4000K,5000K
CPS-HA03-	50W	UL=120-277V	3000,4000K,5000K
CPS-HA03-	60W	UL=120-277V / UH= 277-480V	3000,4000K,5000K
CPS-HA03-	70W	UL=120-277V	3000,4000K,5000K

### SPECIFICATIONS

LM/W: 140
WARRANTY: 5 YEARS
POWER FACTOR: >0.90
SURGE PROTECTION: 4kV line-line, 6kV line-earth (30,40,50W), 6kVline-line, 10kVline-earth (60,70W)
L70: 100,000 HOURS
VOLTAGE: 100-277V
DRIVER TYPE: CONSTANT CURRENT (CC)
POWER TYPE: 0.95
IP66 / IK08 RATED
BEAM ANGLE: 120
OPERATING TEMPERATURE: -40°C to + 65°C (-40°F to +149°F)



**T00C04**



Ceiling Mount



25° Stanchion Mount



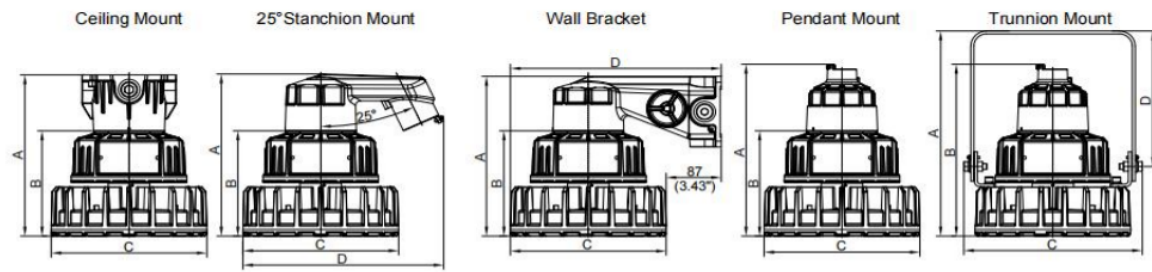
Wall Bracket



Pendant Mount



Trunnion Mount



Dimensions In/mm																		
Unit	Ceiling Mount			25° Stanchion Mount				Wall Bracket				Pendant Mount			Trunnion Mount			
	A	B	C	A	B	C	D	A	B	C	D	A	B	C	A	B	C	D
Inch	10.8	7.0	9.8	10.8	7.0	9.8	12.6	10.7	7.0	9.8	13.2	11.5	7.0	9.8	13.7	11.5	11.2	9.1
mm	274	179	248	275	179	248	320	271	179	248	336	292	179	248	348	292	284	230